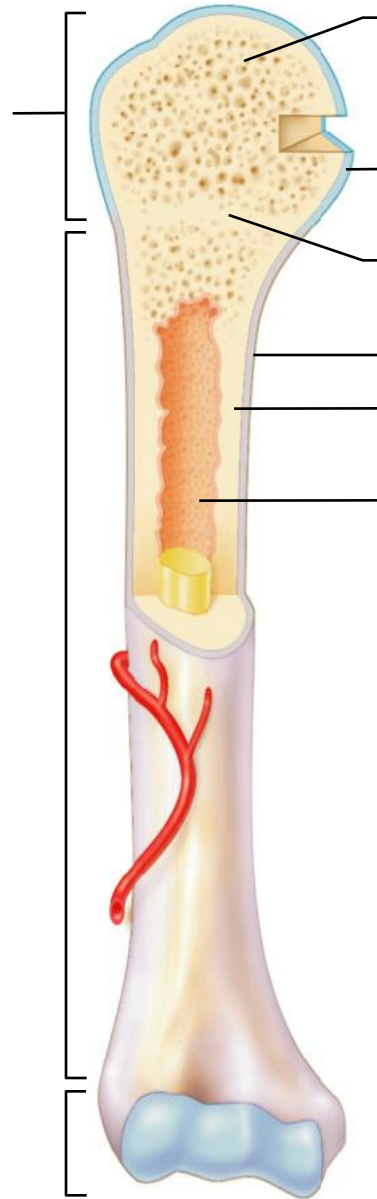
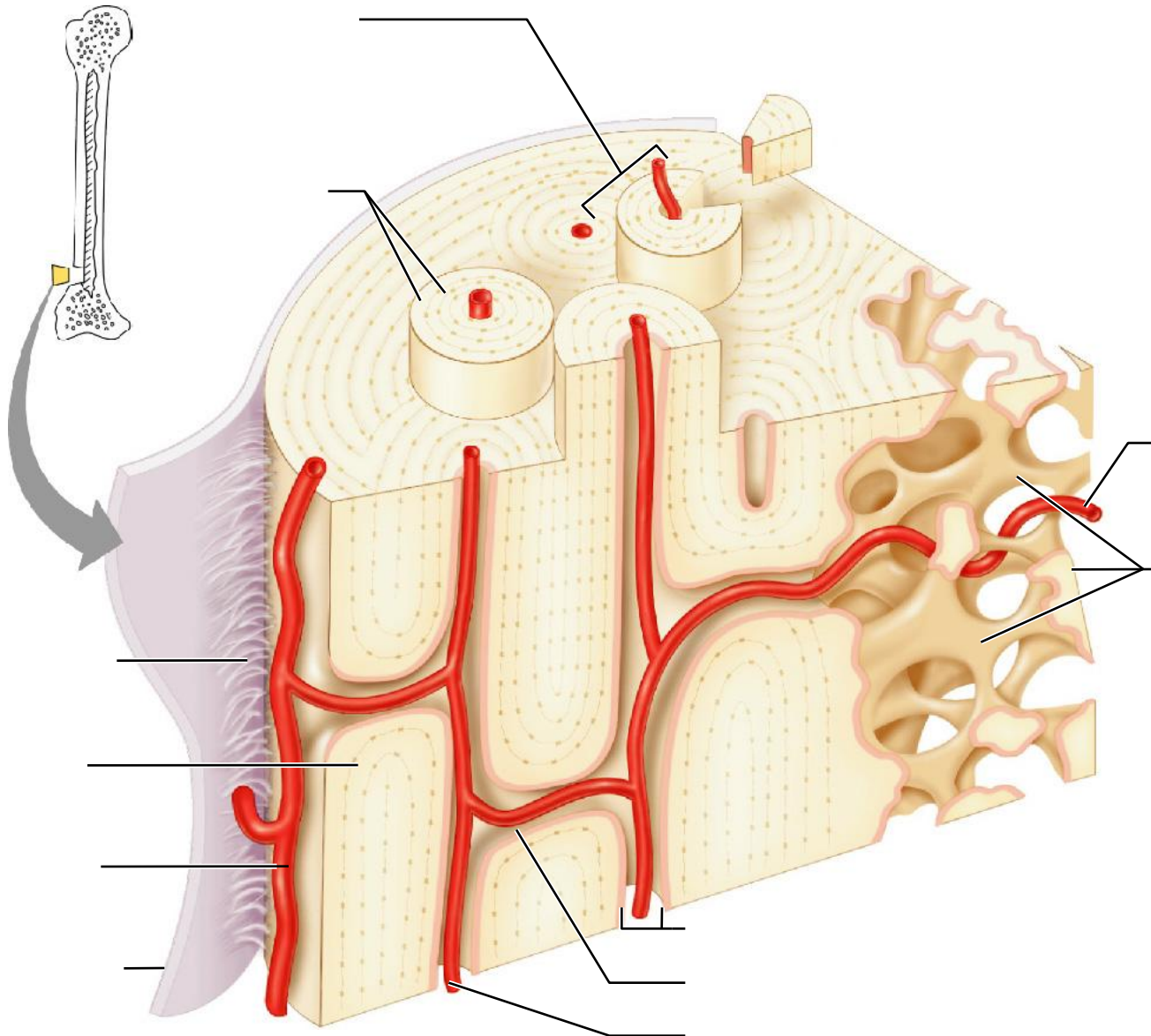


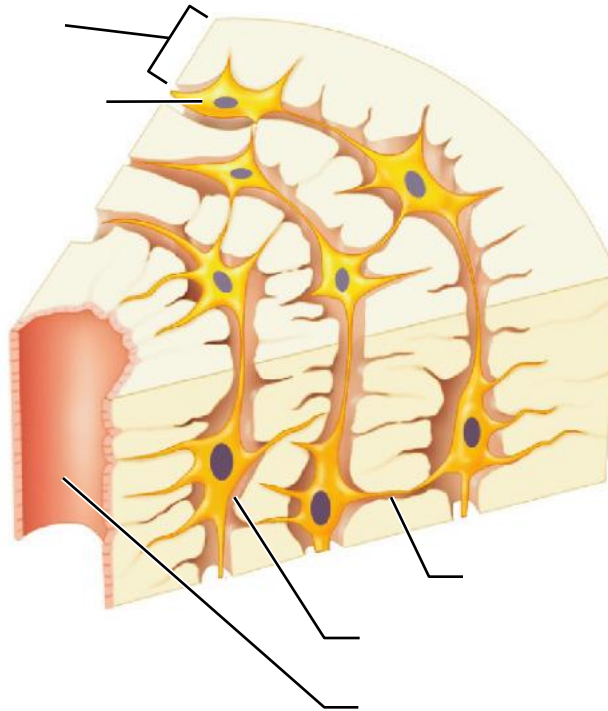
**Figure 5.2a The structure of a long bone (humerus). (a) Anterior view with longitudinal section cut away at the proximal end.**



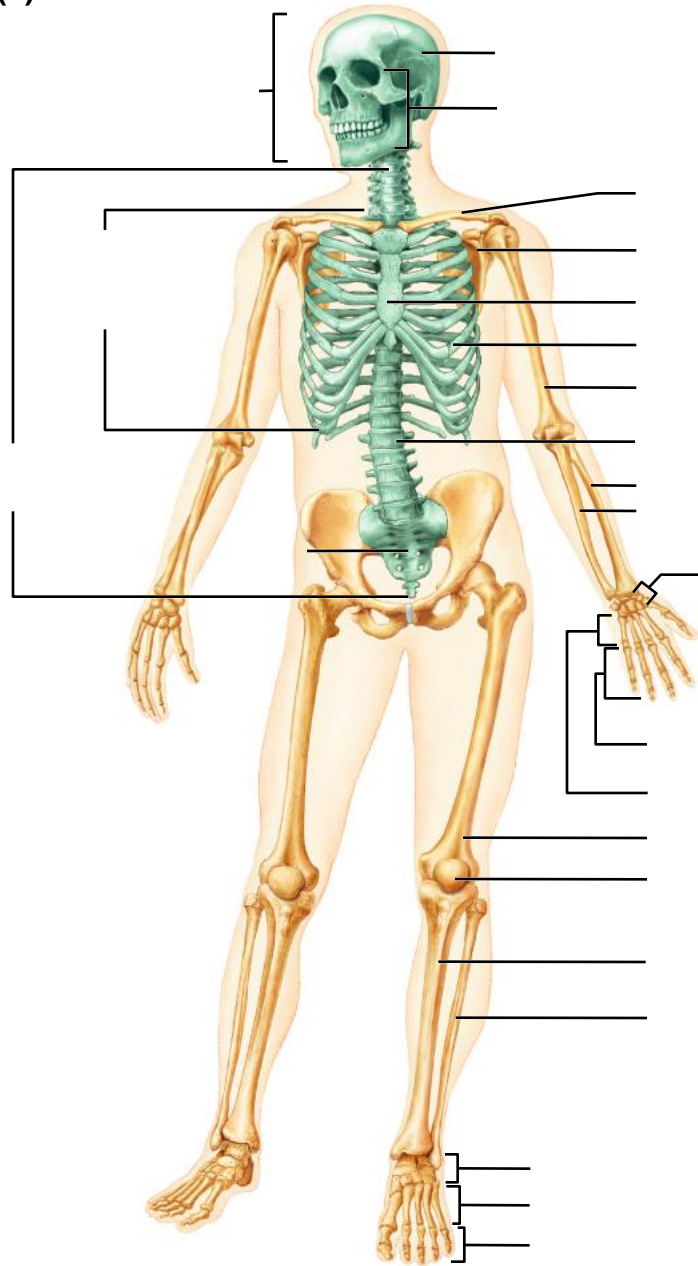
**Figure 5.3a Microscopic structure of compact bone. (a).**



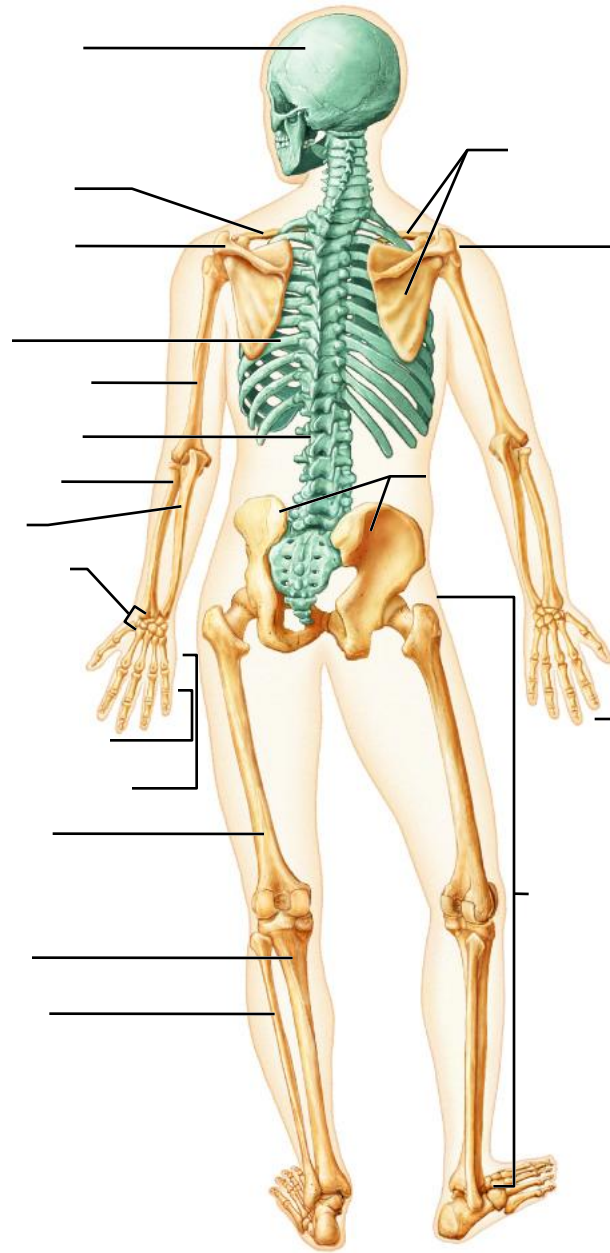
**Figure 5.3b Microscopic structure of compact bone. (b).**



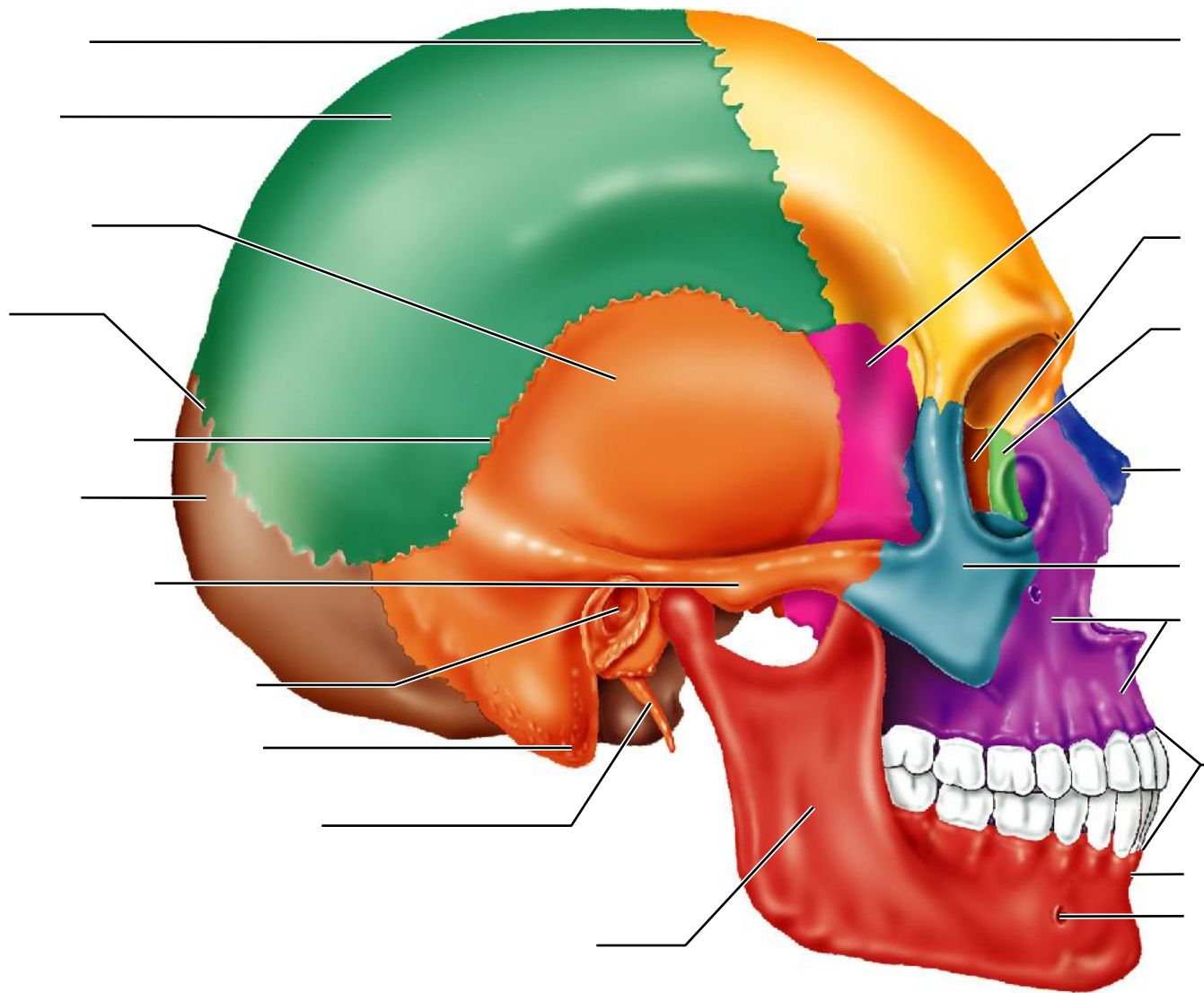
**Figure 5.6a The human skeleton. (a) Anterior view.**



**Figure 5.6b The human skeleton. (b) Posterior view.**

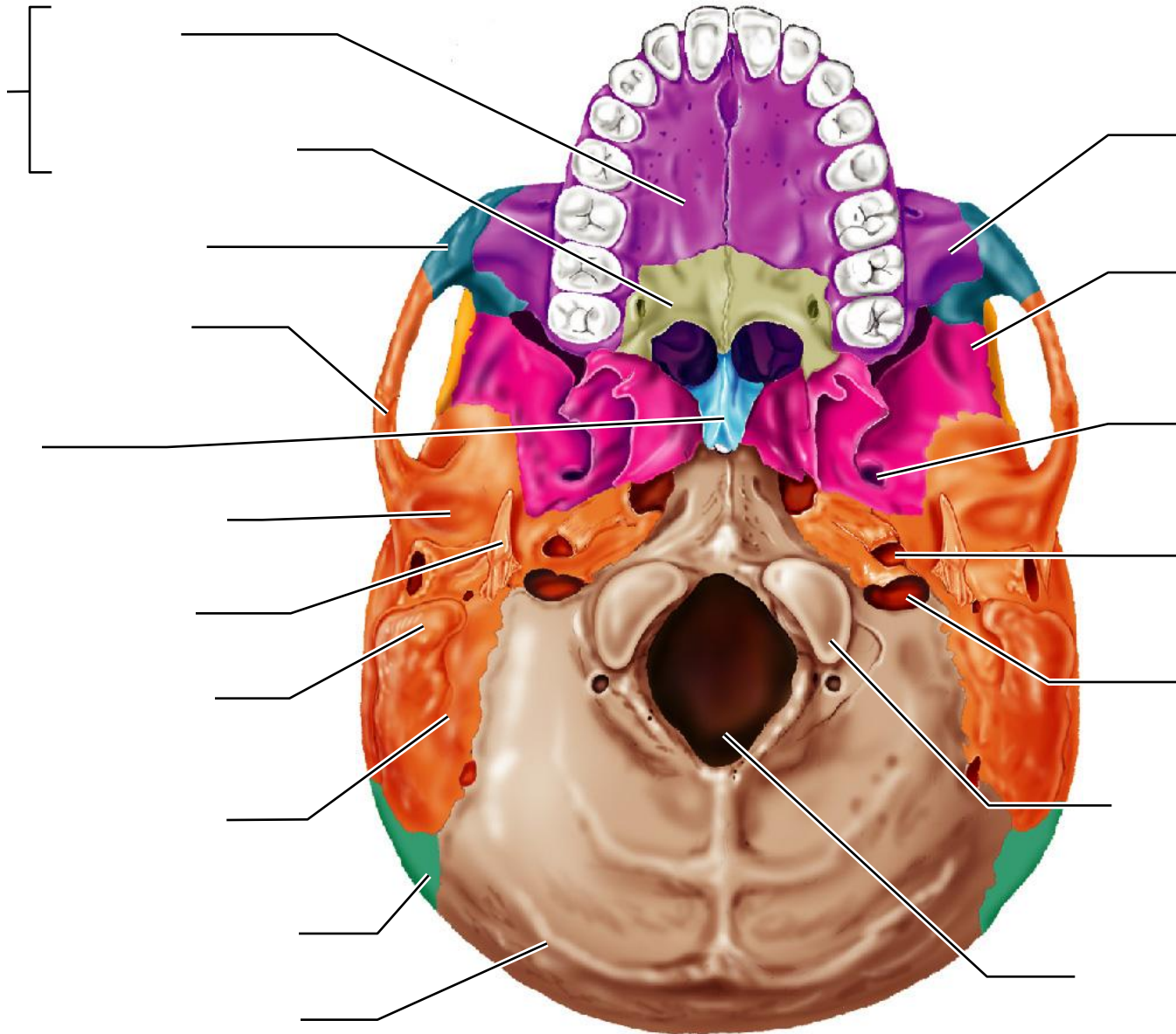


**Figure 5.7 Human skull, lateral view.**

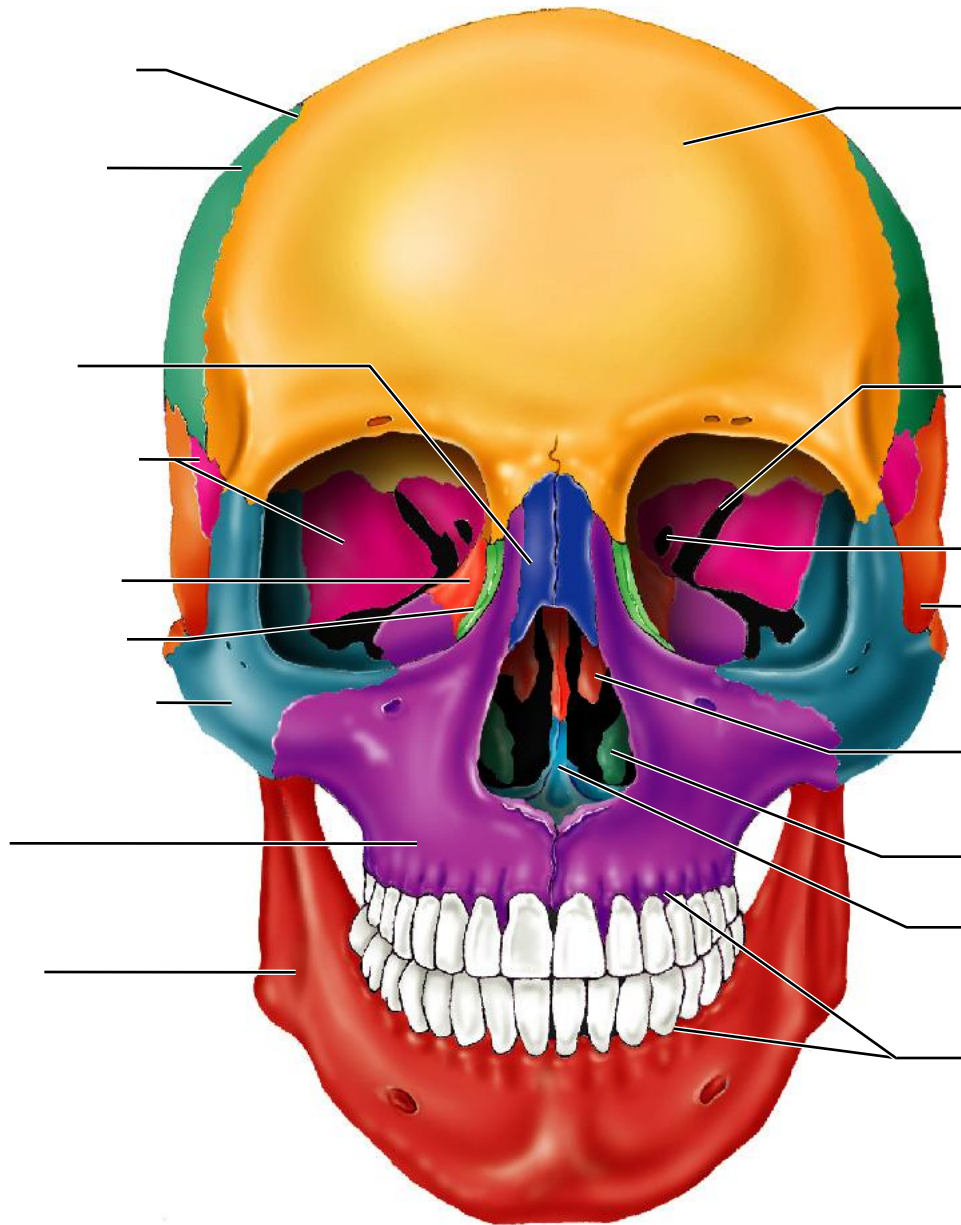




**Figure 5.9 Human skull, inferior view (mandible removed).**

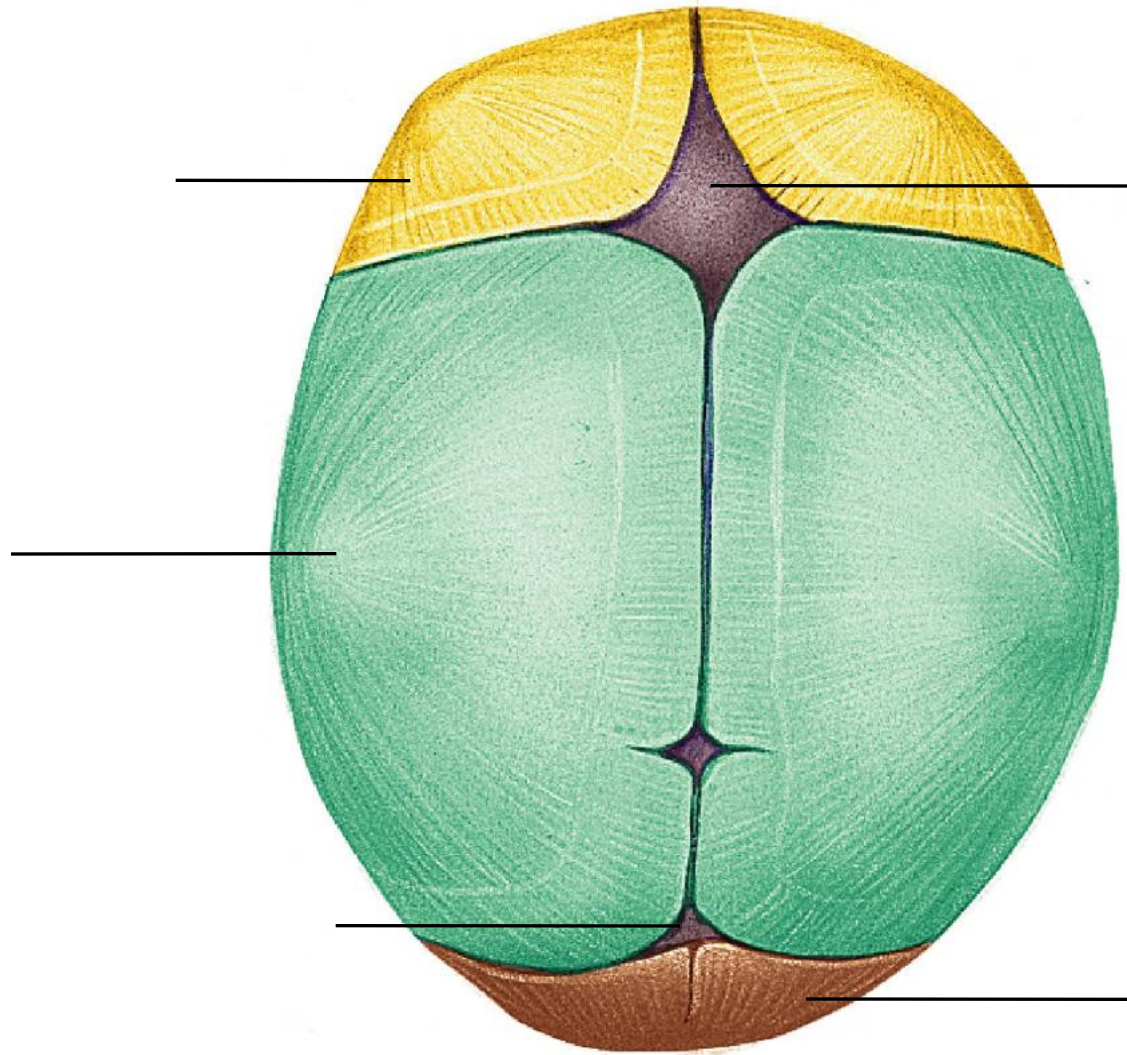


**Figure 5.11 Human skull, anterior view.**

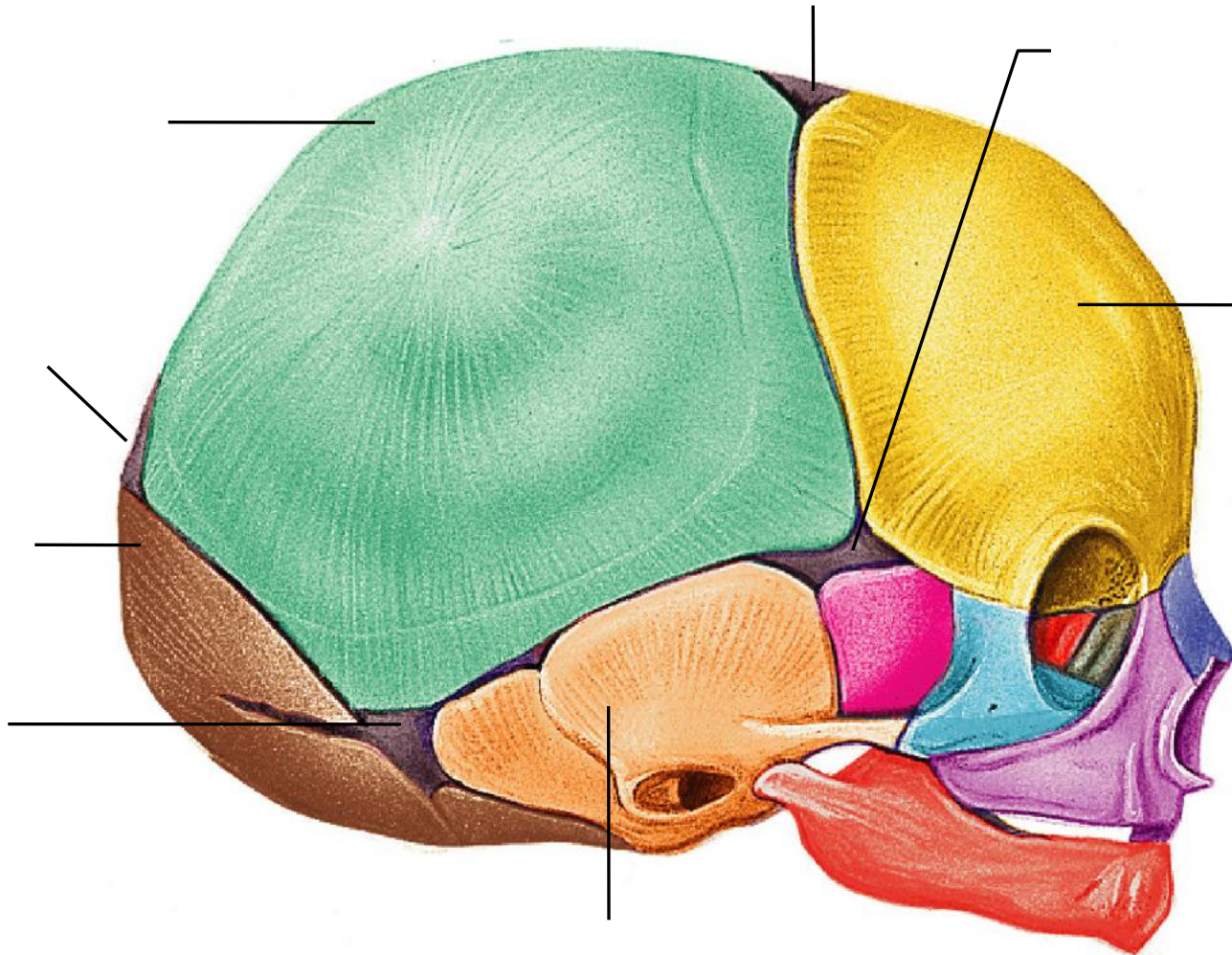




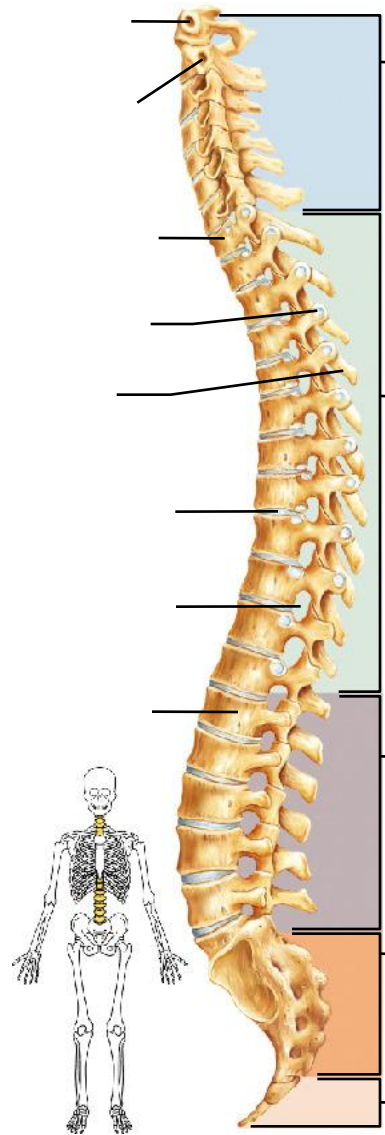
**Figure 5.13a The fetal skull. (a) Superior view.**



**Figure 5.13b The fetal skull. (b) Lateral view.**

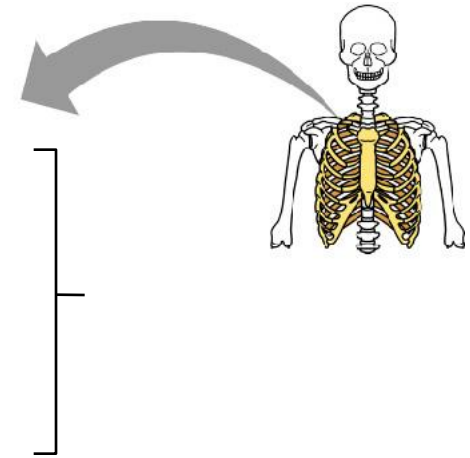
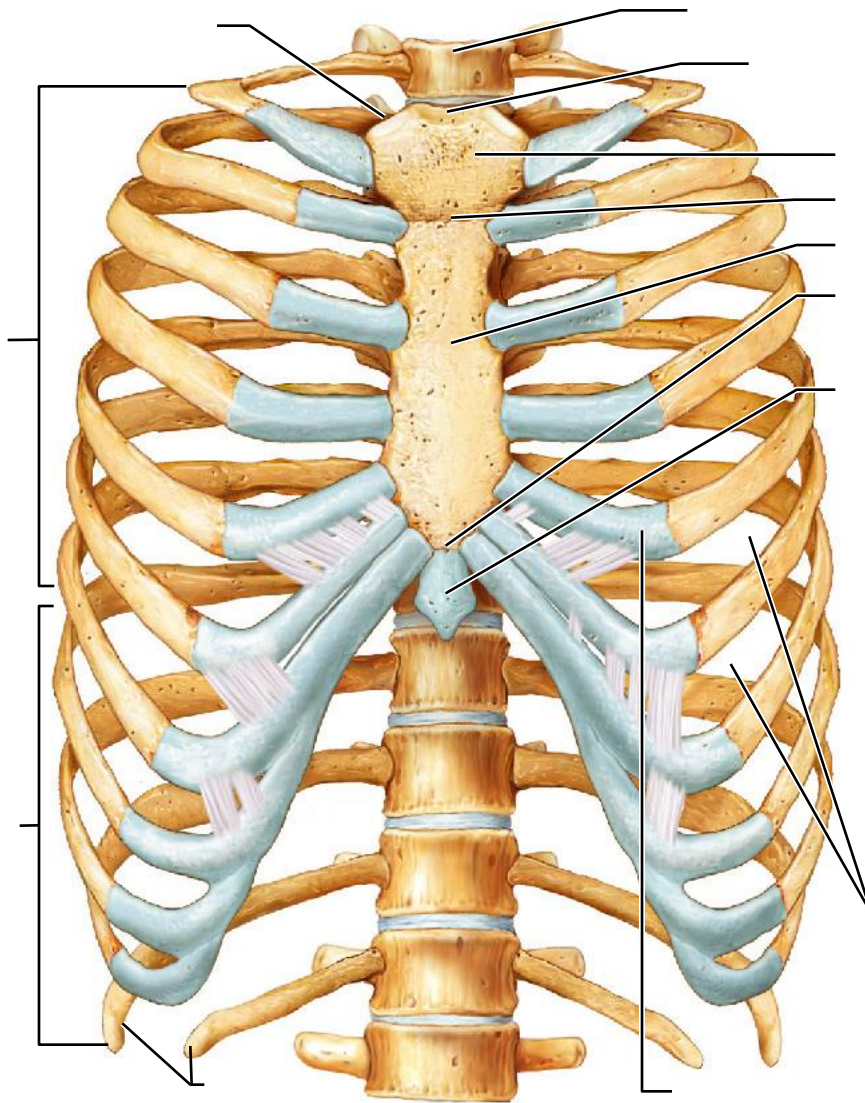


**Figure 5.14 The vertebral column.**

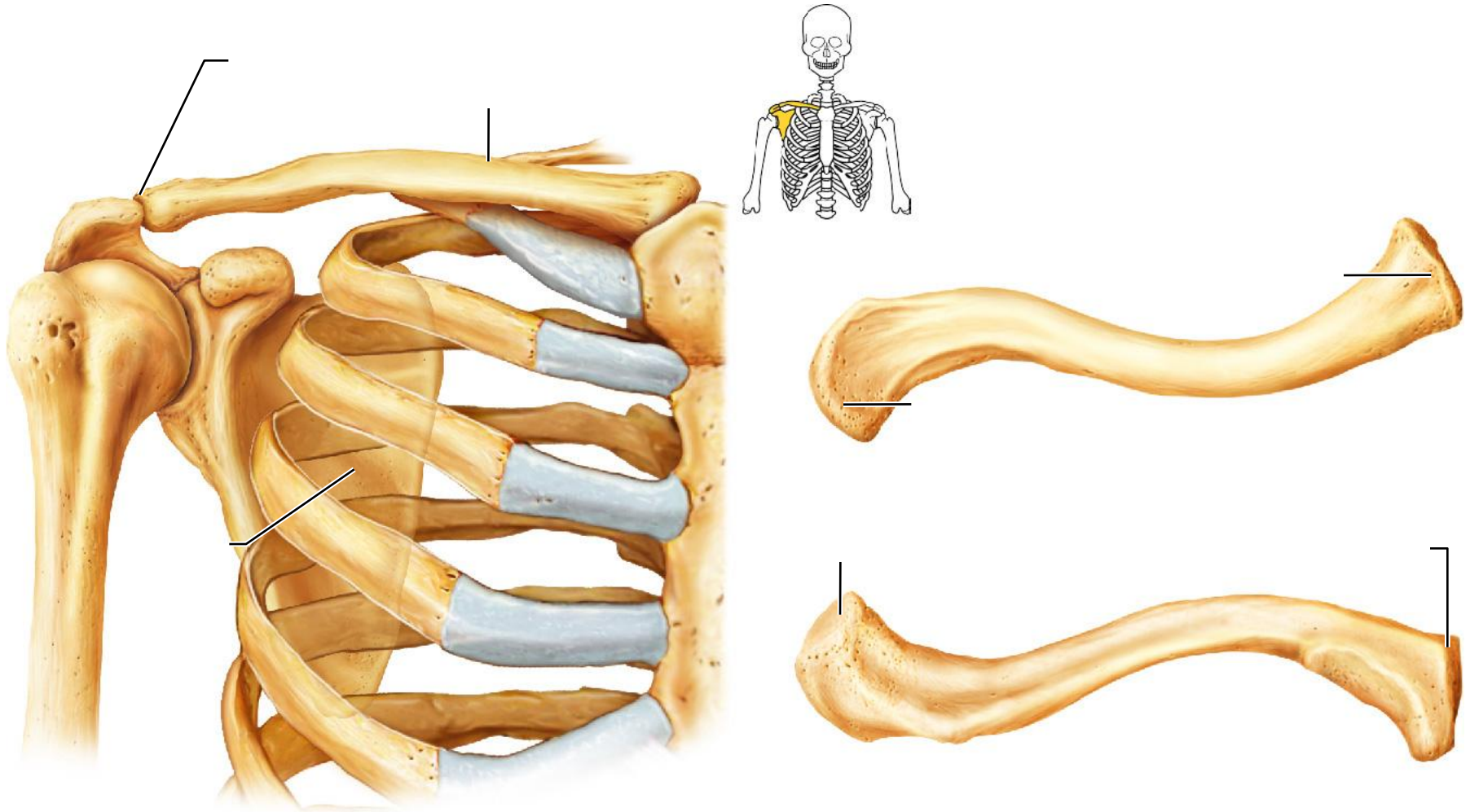




**Figure 5.20a The bony thorax (thoracic cage). (a) Anterior view.**

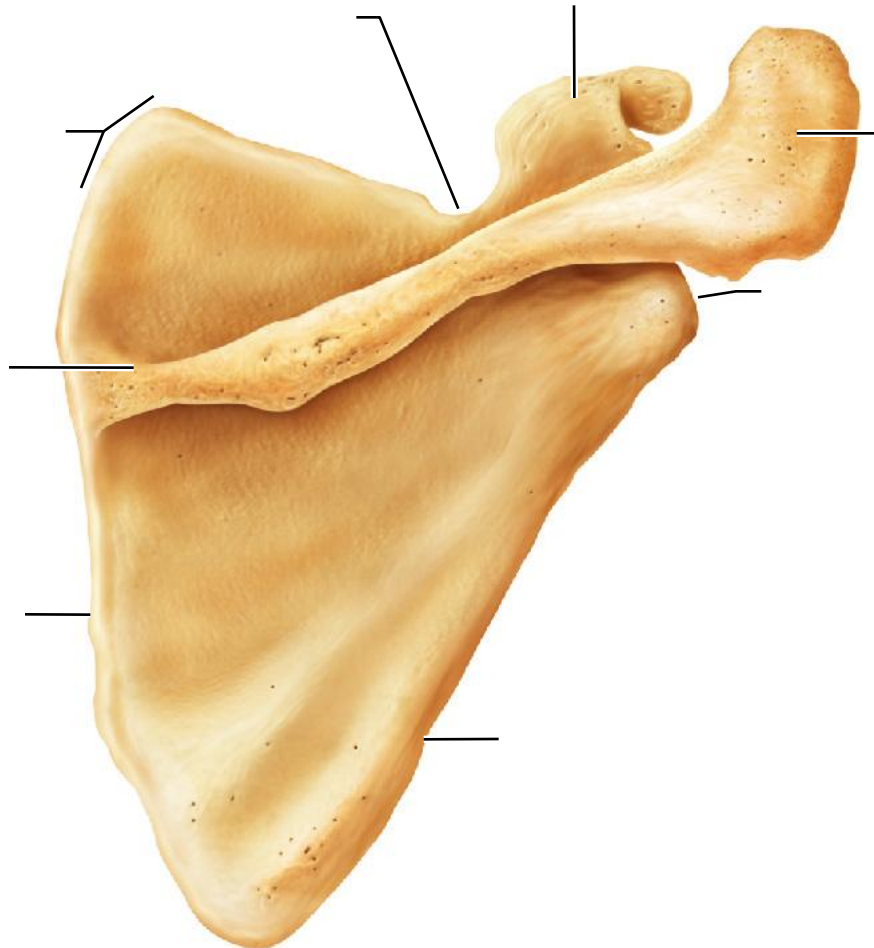


**Figure 5.21a–b** Bones of the shoulder girdle. (a) Articulated right shoulder (pectoral) girdle showing the relationship to bones of the thorax and sternum, and (b) right clavicle, superior and inferior views.

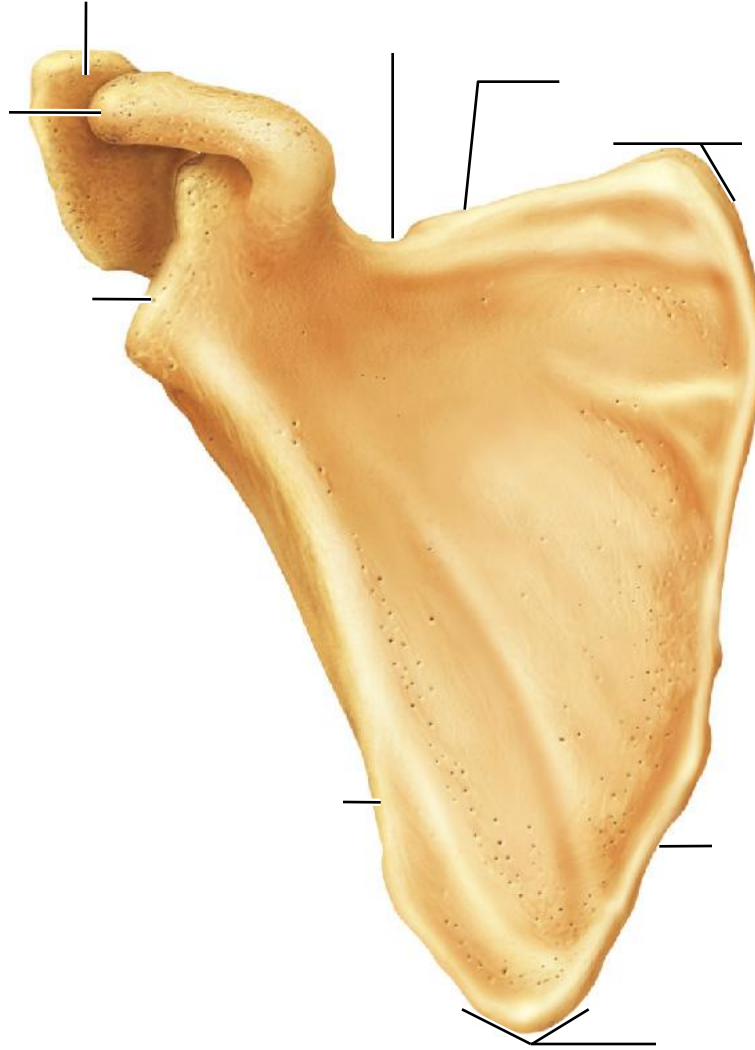




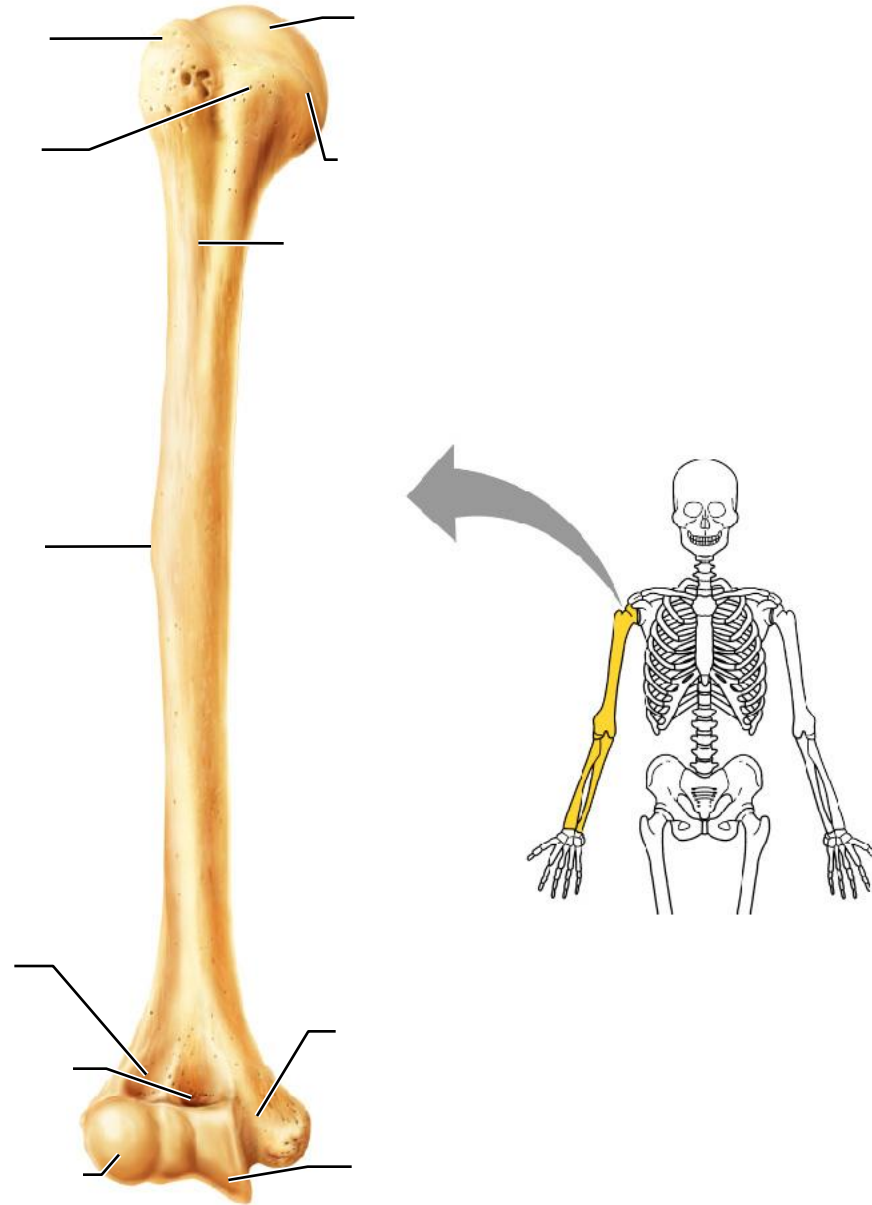
**Figure 5.21c Bones of the shoulder girdle. (c) Right scapula, posterior aspect.**



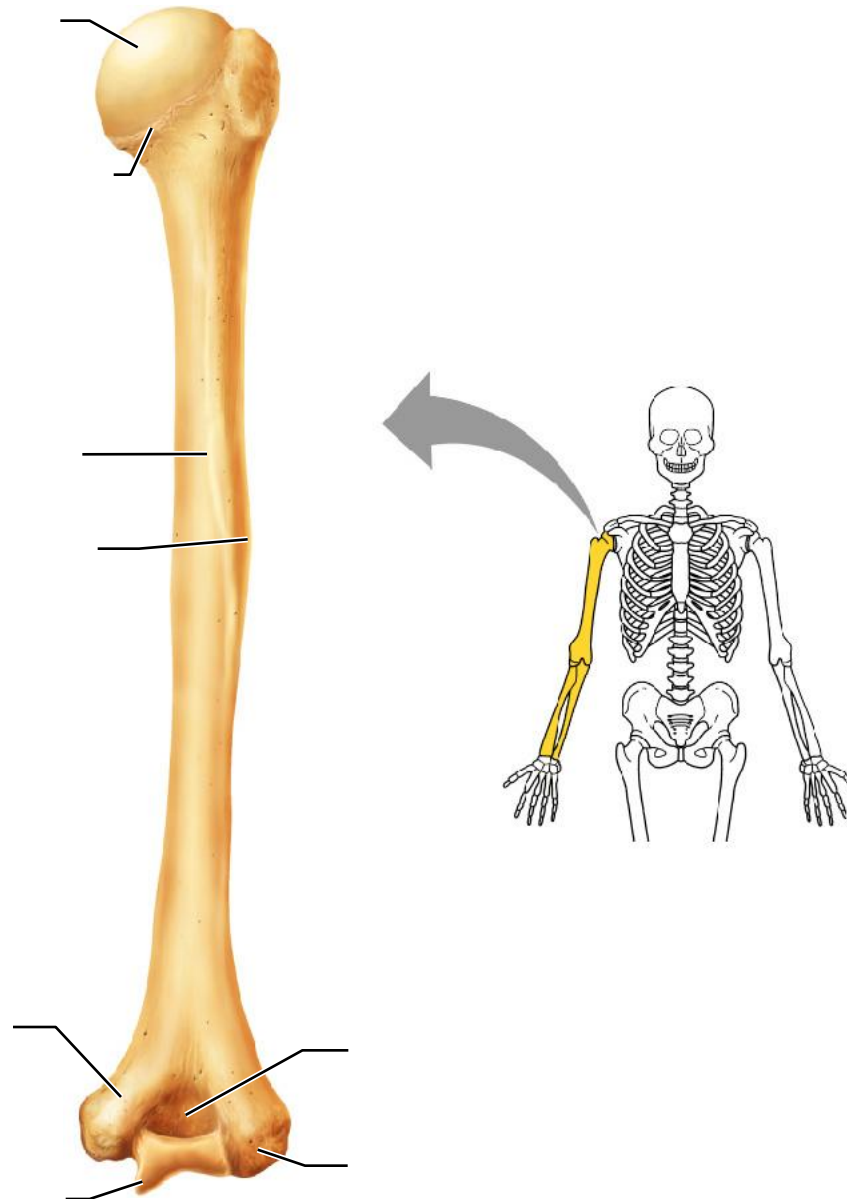
**Figure 5.21d Bones of the shoulder girdle. (d) Right scapula, anterior aspect.**



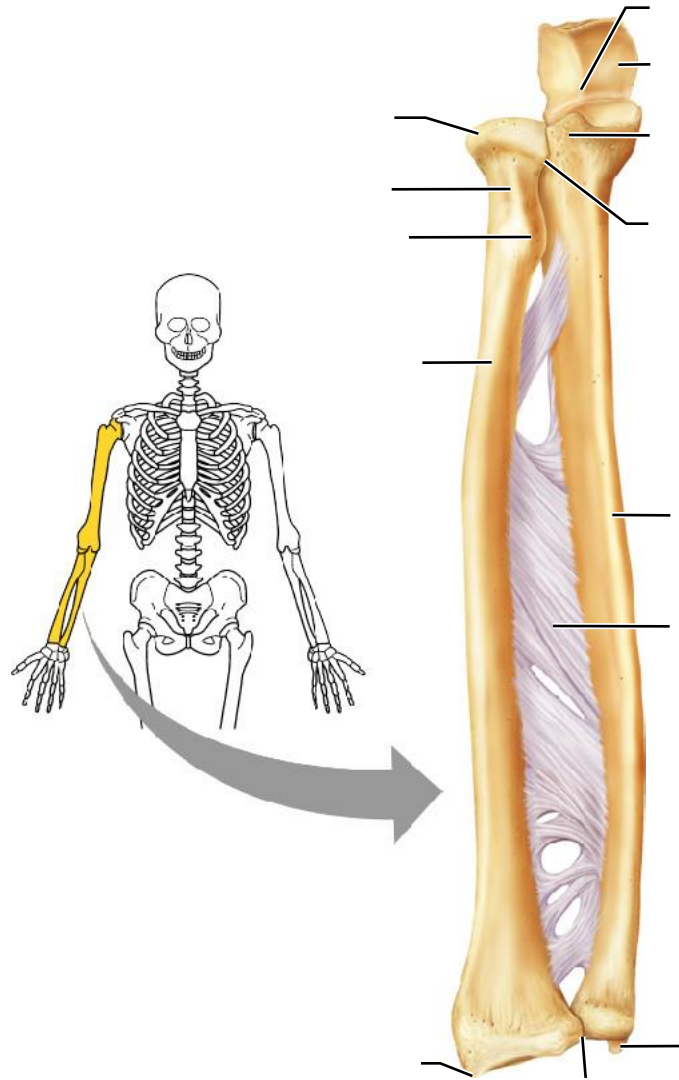
**Figure 5.22a Bones of the right arm and forearm. (a) Humerus, anterior view.**



**Figure 5.22b Bones of the right arm and forearm. (b) Humerus, posterior view.**

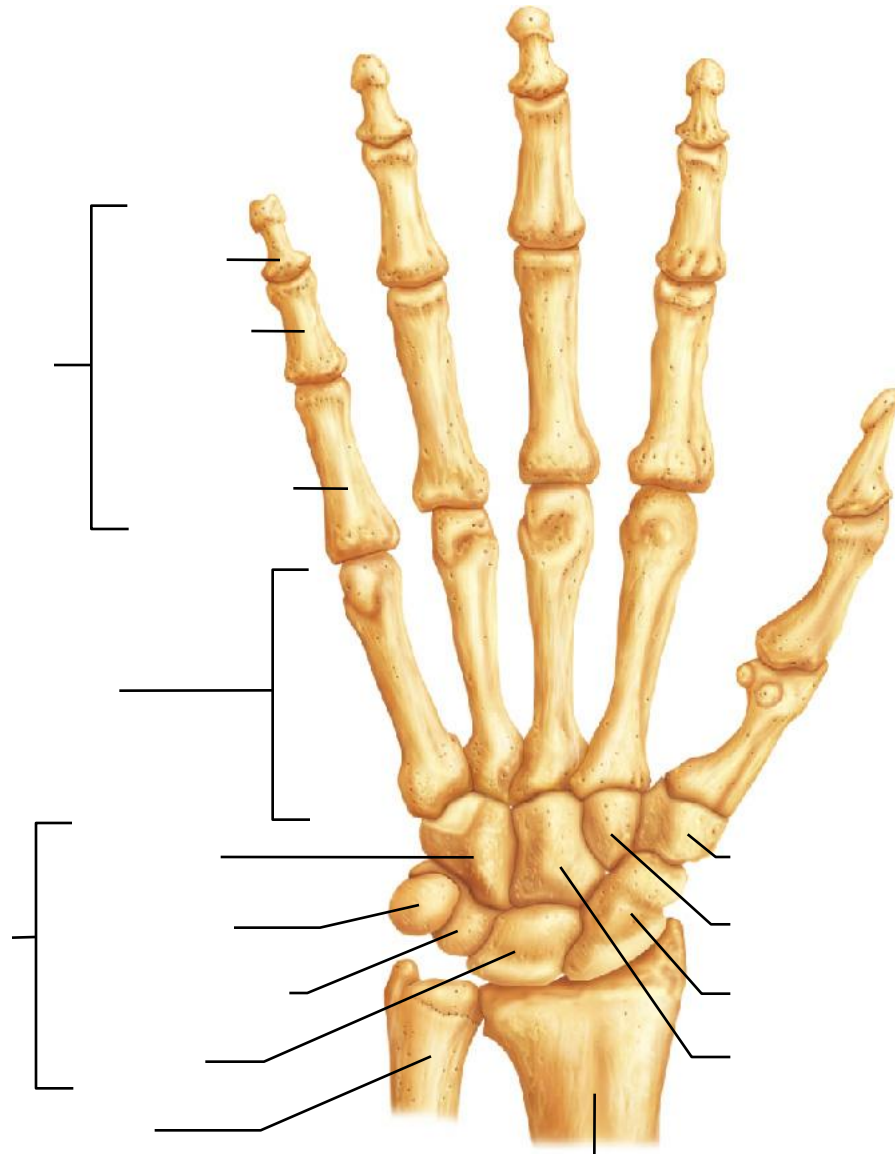


**Figure 5.22c Bones of the right arm and forearm. (c) Anterior view of the bones of the forearm: the radius and the ulna.**

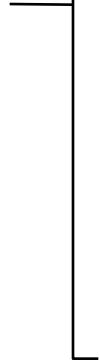




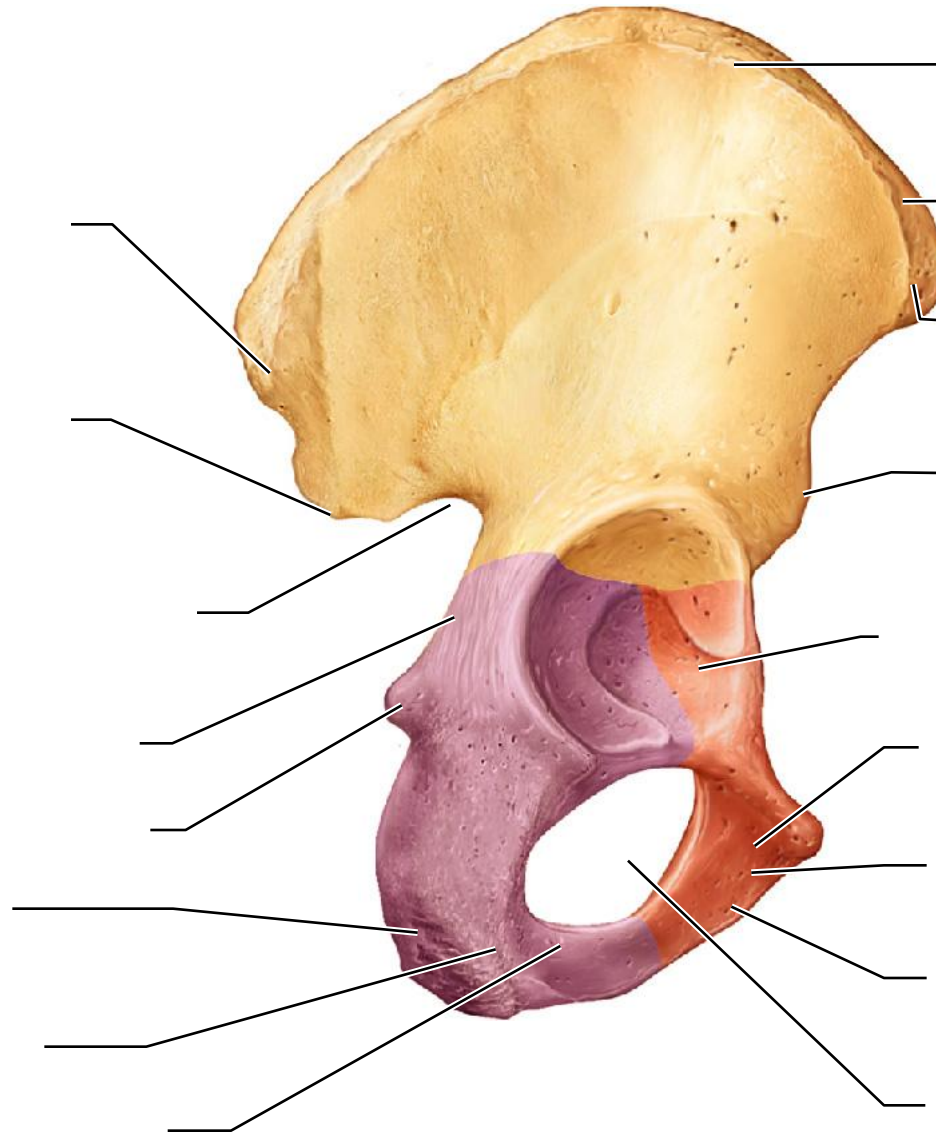
**Figure 5.23 Bones of the right hand, anterior view.**



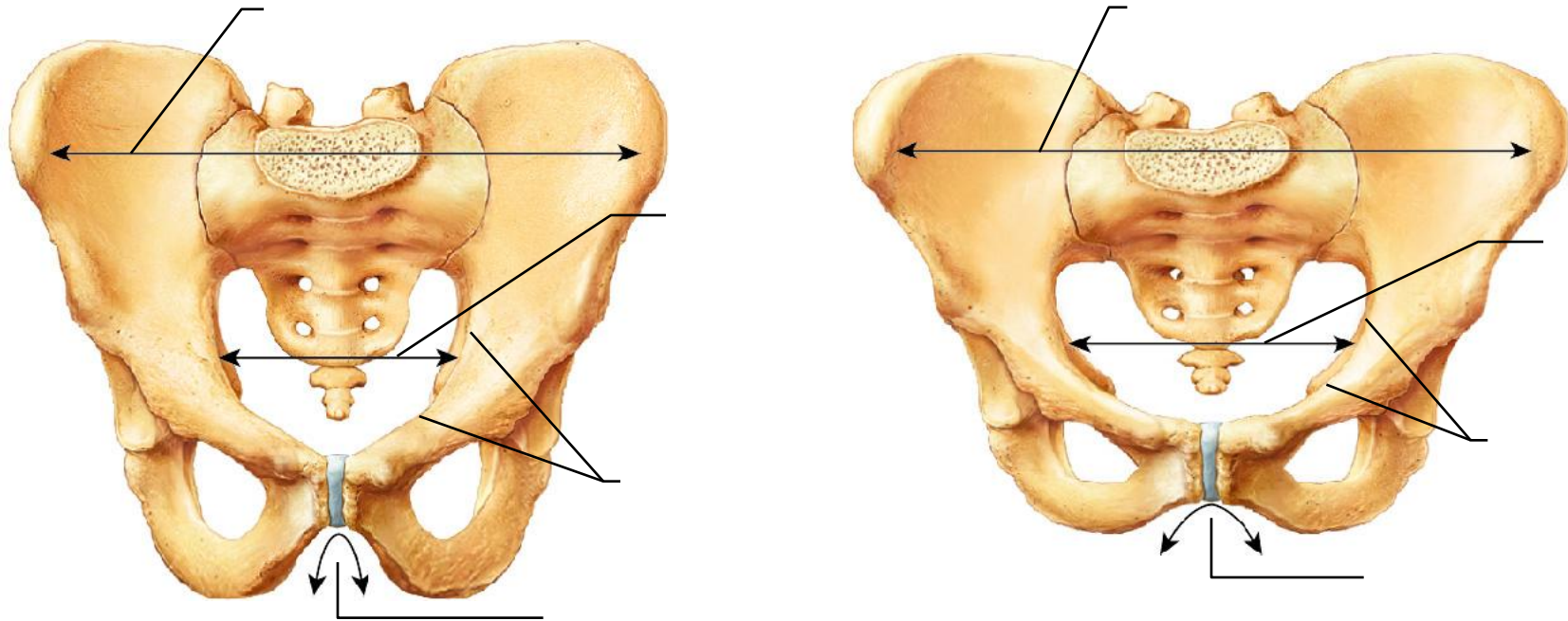
A diagram of the lower extremities, showing the bones of the pelvis, femur, tibia, and foot. The pelvis is highlighted in yellow, and the femur and tibia are highlighted in light blue. The foot is shown in a simplified, stylized manner.



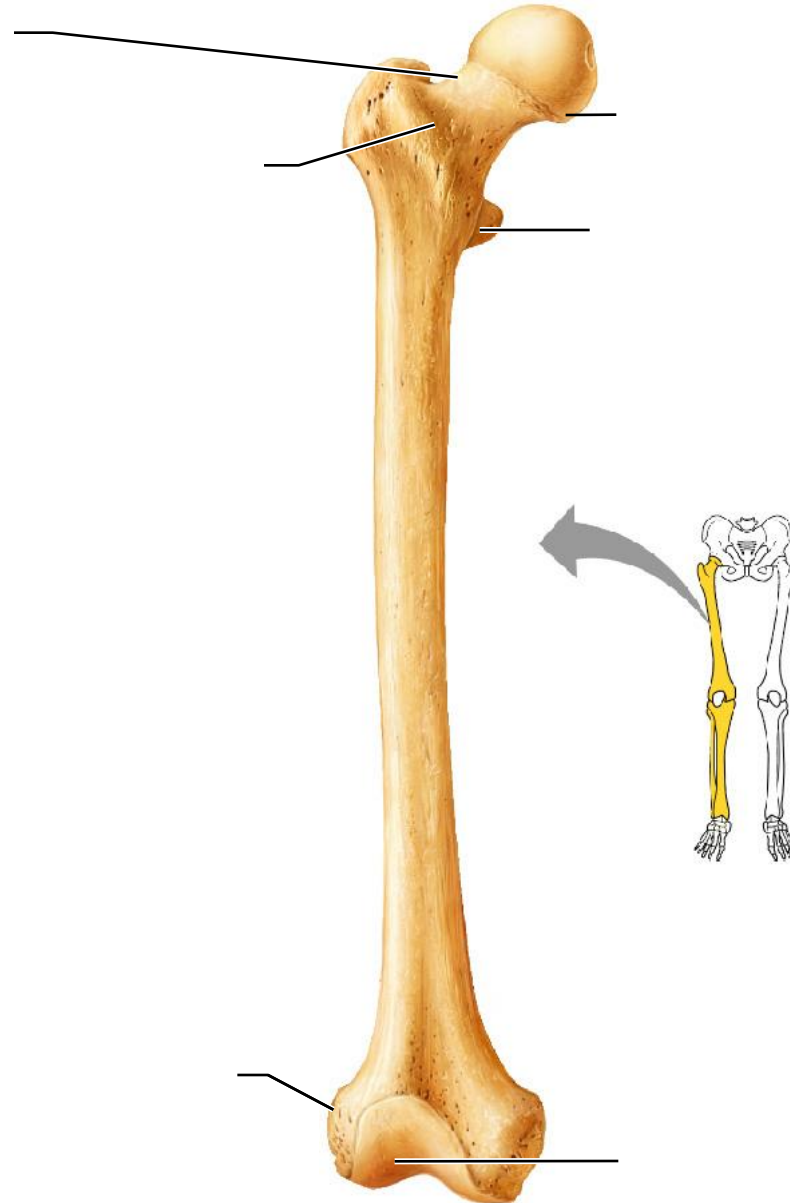
**Figure 5.24b The bony pelvis. (b) Right coxal bone, showing the point of fusion of the ilium, ischium, and pubic bones.**



**Figure 5.24c The bony pelvis. (c) Comparison of the male (left) and female (right) pelves.**

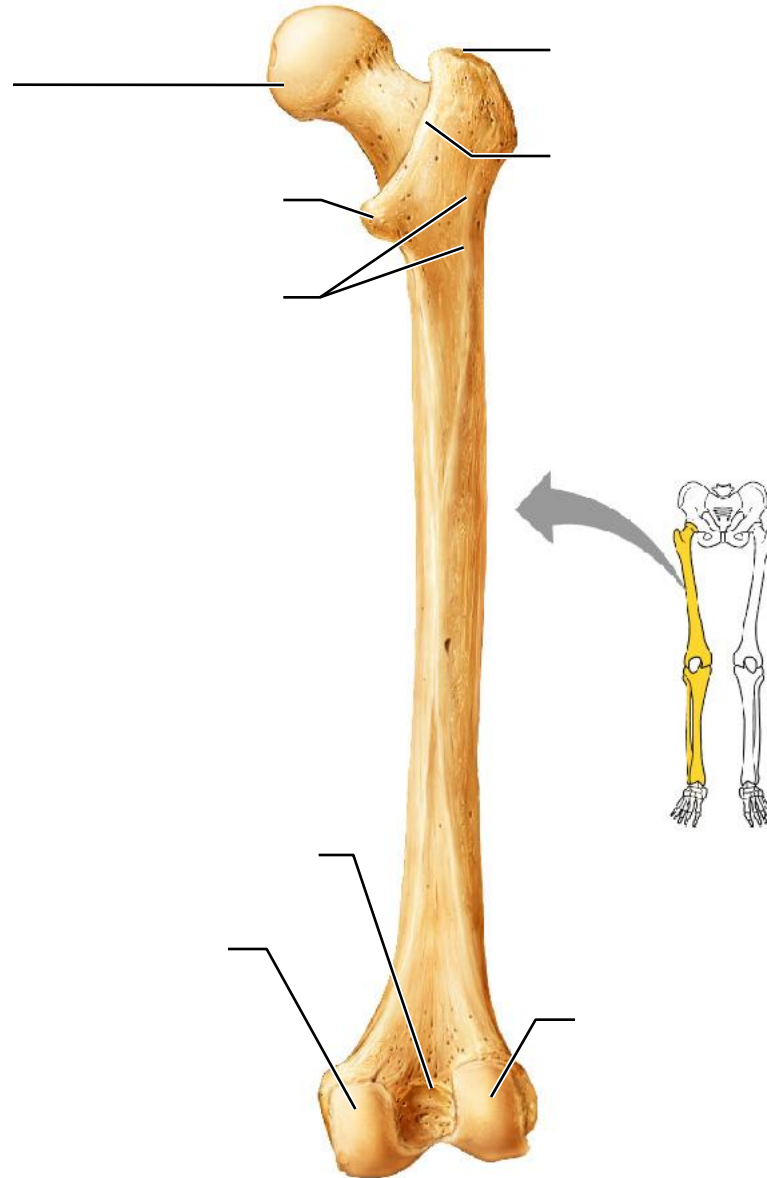


**Figure 5.25a Bones of the right thigh and leg. (a) Femur (thigh bone), anterior view.**

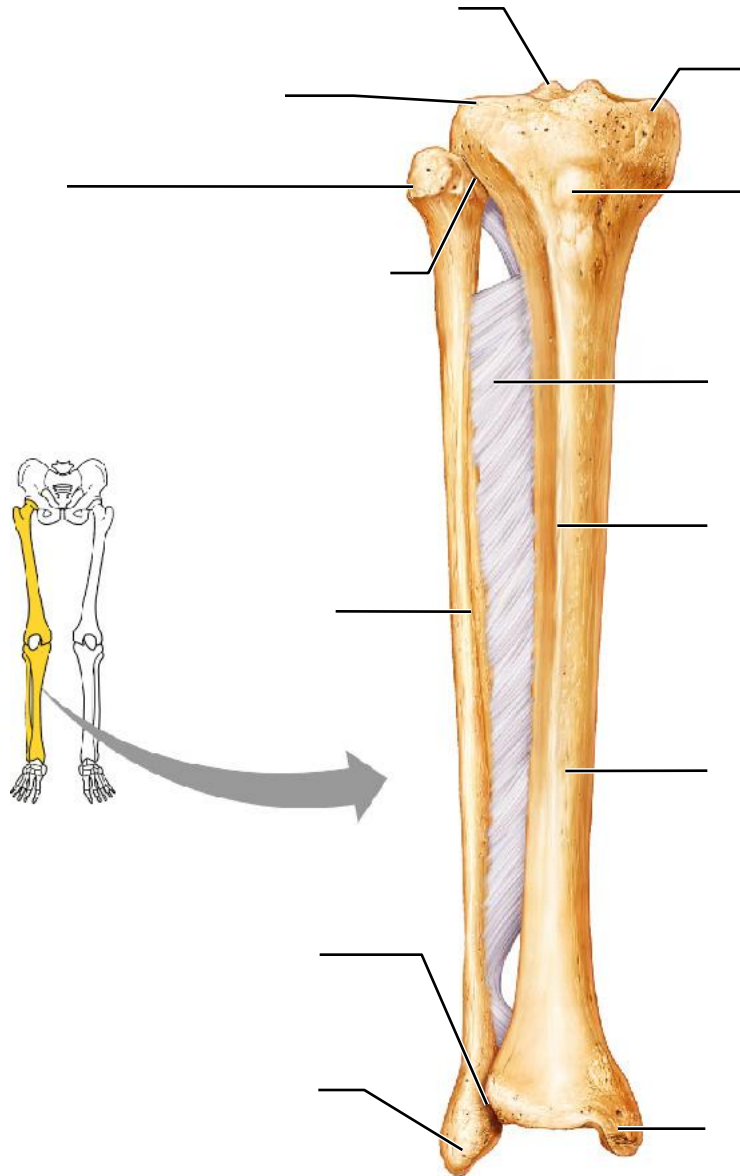




**Figure 5.25b Bones of the right thigh and leg. (b) Femur, posterior view.**



**Figure 5.25c Bones of the right thigh and leg. (c) Tibia and Fibula of the leg, anterior view.**



**Figure 5.26 Bones of the right foot, superior view.**

